

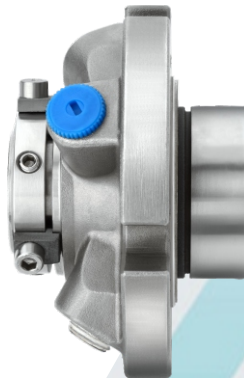
Chemical

Pharmaceuticals

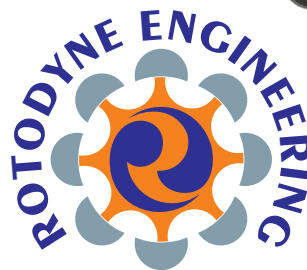
Food &
Beverages

Marine

*Engineered
Solution
in
Fluid
Sealing*



Spl. in Mechanical Shaft Seals for
Pumps, Compressor &
Pressure Vessels Handling Regular,
Dangerous or Costly Fluid
All Pump Spares and Repairs



**ROTODYNE
ENGINEERING**

Fertilizers

Petrochemicals

Refineries

Power Plant

We proud to introduce ourselves as one of the leading manufacturer of **MECHANICAL SEALS** and **THERMOSYPHON PORT** and **supplier of Chemical Process Pumps** which is situated in Mumbai and Gujarat respectively. And we have all ranges of our **MECHANICAL SEALS** for **METALLIC AND NON METALLIC PUMP**, **Agitators**, **Dryers**, **Homogenizers**, **ANFD**, **RVD**, **RVCD** etc. to meet the various industries like **Steel**, **Petrochemicals**, **Oil & Refineries**, **Pharmaceuticals**, **Chemicals**, **Fertilizers**, **Breweries** and **Beverages Industries**, **OEM's** etc.

For, **Mechanical seal**,

ROTODYNE ENGINEERING having more than 10 years of experience in mechanical seal Designing & Manufacturing.

Also note that we can provide our **MECHANICAL SEALS** to the various pumps like **QVC**, **Fluorolined**, **Investa**, **Antico**, **Alfa-Laval**, **KSB**, **Sulzer**, **Kirloskar Brothers**, **Flow Serve**, **Tushaco**, **GMM Pfaulder**, **Swiss Glass Coat**, **Standard Engineers**, **Grundfos** and **Johnson** as per pump details i.e. **Temperature**, **Handling of Liquid** and **Seal Size** from **10mm to 200mm**.

RE-001 RUBBER BELLOW SEAL

Shaft Dia. : 10mm to 100mm
Pressure : Up to 10 bar
Temperature : -20°C to 180°C
Speed : 3000 r.p.m.



RE-003 TEFLON BELLOW

Shaft Dia. : 19mm to 100mm
Pressure : Up to 5 bar
Temperature : -23°C to 90°C
Speed : 3000 r.p.m.

Outside Mounted Balanced
Extremely Corrosive Service



RE-002 CONICAL SPRING SEAL

Shaft Dia. : 10mm to 100mm
Pressure : Up to 12 bar
Temperature : -23°C to 160°C
Speed : 3000 r.p.m.

Torque Transmission by
Elastomer Collor Water Pumps, Oil Pumps



RE-004 SINGLE SPRING CLUTCH TYPE

Shaft Dia. : 10mm to 100mm
Pressure : Up to 10 bar
Temperature : -20°C to 120°C
Speed : 3000 r.p.m.



RE-005 METAL BELLOW

Shaft Dia. : 100mm
 Pressure : Up to 14 bar
 Temperature : -23°C to 350°C
 Speed : 3000 r.p.m.



Inherently balanced
 Petrochemicals, Petroleum Refinery,

RE-006 SINGLE COIL SPRING

Shaft Dia. : 12mm to 100mm
 Pressure : Up to 10 bar
 Temperature : -20°C to 160°C
 Speed : 3000 r.p.m.



Water Pumps, Circulation Pumps
 for central heating Chemicals Process Pumps

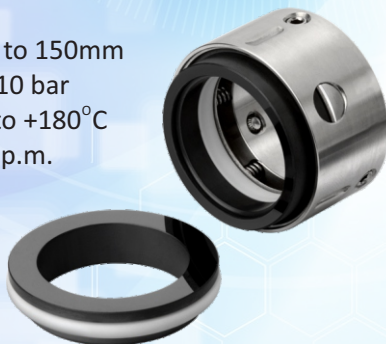
RE-007 SINGLE COIL SPRING

Shaft Dia. : 10mm to 150mm
 Pressure : Up to 30 bar
 Temperature : -50°C to 180°C
 Speed : 3000 r.p.m.



RE-008 MULTI SPRING

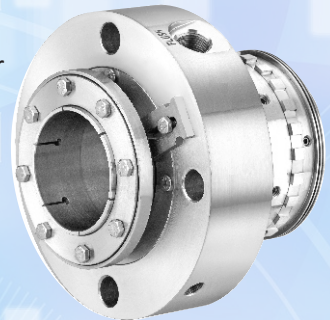
Shaft Dia. : 30mm to 150mm
 Pressure : Up to 10 bar
 Temperature : -20°C to +180°C
 Speed : 3000 r.p.m.



RE-009 CARTRIDGE BELLOW

Takes care of Misalignments

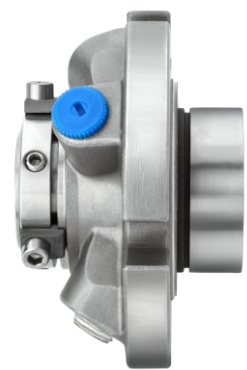
Pressure : Up to 14 bar
 Temperature : 350°C



RE-010 UNIVERSAL GLAND

40 : AM 350 Bellow
 45 : Hast C Bellow

Pressure : Up to 14 bar
 Temperature : 350°C



RE-011 ASH SLURRY SEAL

Ash Slurry Seal for Bottom ash

Faces : TC / TC

Api Plan : 32 / 32

Pressure :

Vacuum : up to 14 bar

Temperature:

Amb : 1600°C



RE-012 CARTRIDGE SEAL

Shaft Dia. : 10mm to 100mm
 Pressure : Up to 12 bar
 Temperature : -23°C to +160°C
 Speed : 3000 r.p.m.

Torque Transmission by
 Elastomer Collor
 Water Pumps, Oil Pumps



RE-013 DOUBLE MECHANICAL SEAL

Shaft Dia. : 40mm to 240mm
 Pressure : Full Vacuum to 15 bar
 Temperature : -30°C to +260°C
 Speed : 250 r.p.m.



RE-014 DRY SEAL

Shaft Dia. : 20mm to 150mm
 Pressure : Full Vacuum to 8 bar
 Temperature : -30°C to +110°C
 Speed : 350 r.p.m.



Manufactured by:



**ROTODYNE
ENGINEERING**

Gala No. 2, Near Dhobi Ghat, Behind Sunteck City,
 Nahar Singh Compound, Ram Mandir Road,
 Goregaon (W), Mumbai - 400104.

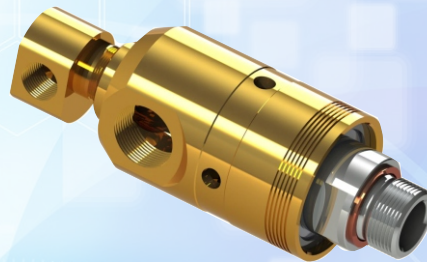
Office : +91 9594734372

Mobile : +91 9594734372 / +91 9892360712

Email : rotodyneeng@gmail.com

Web : www.rotodyneengineering.com

RE-015 ROTARY JOINT



FUTURES: The housing made with G.M./Brass, thread of metallic components are made with S.S.

BODY: Radial or Axial R.H. FEMALE THREAD AS PER 228 or NPT.

THREADED ROTOR: As per ISO 228 / NPT /
 # Optional : Quick Release Nipple (Flanged End)

SIZE: 3/8" BSP to 3" BSP

RE-016 THERMOSYPHON PORT

Material SS/MS
 Low Pressure Upto 12 Bar
 High Pressure Upto 40 Bar



Thermosyphon Systems provide lubricant, dissipate heat and maintain the required pressure gradient across the seal faces in case of double back to back and tandem seal arrangements for pumps and agitators

Authorised Dealer: